

SAFETY EVOLUTION  
**JUBA**

**K-ROCK**

SAFETY  
RESISTANCE  
ENGINEERING

**CUT PROTECTION GLOVES**



# K-ROCK

SAFETY  
RESISTANCE  
ENGINEERING

## ➤ K-ROCK® technology, textile engineered fibres

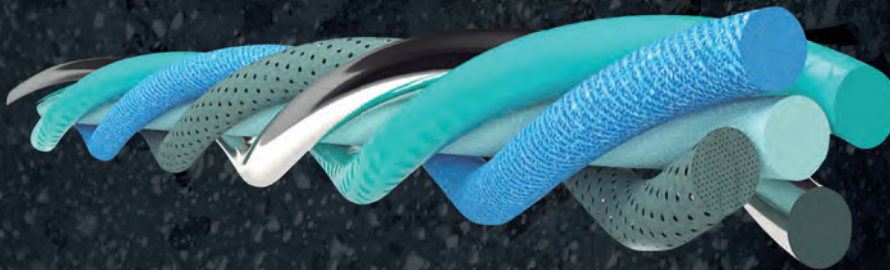
K-ROCK® is the anti-cut technology developed by Juba: a highly **a cut resistant fiber**, with great durability, outstanding sensibility and excellent dexterity.

The secret of K-ROCK® technology lies in a lightweight composite filament in the central core braided together with **engineered textile yarns** which result in a powerful fabric resistant to cuts, snags and tears.

## ➤ The greatest innovations in the manufacture of anti-cut work gloves

- K-ROCK® by Juba combines **great resistance** and **outstanding performance**, providing extra **durability**.
- It is a **lightweight cut protection** composite filament.
- **Soft fit and breathable material** to give the best of your work.

K-ROCK® presents different gauges and coating solutions to improve **grip, dexterity, toughness or sensitivity for every industrial application demanding cut protection**.





# POLYURETHANE <

## 4422 POWER CUT ANTISTATIC

K-ROCK® glove with polyurethane palm coating. Antistatic.

### FEATURES

- Extra touch, lightness and flexibility.
- Excellent grip in dry, slightly wet and oiled environments.
- **Touch screen capability in all fingers** to facilitate work with touch terminals.
- **Electrostatic charge dissipative protective glove** to minimize risk and prevent damage to products handled by electrostatic charges in areas with flammable or explosive atmospheres.

### USE

- Touch screen devices.
- Maintenance of machinery with antistatic risk.
- Electronic manufacturing.
- Appliances industry.
- Renewable energy.

GAUGE 15 Sizes from 6 to 11



## 4570RF POWER CUT

K-ROCK® glove with polyurethane palm coating.

### FEATURES

- Fresh feeling thanks to its **breathability**.
- Offers a great touch and excellent grip on dry and slightly damp surfaces.
- Nitrile reinforcement between thumb and index finger **that provides greater resistance**.
- Contact heat resistance, 100°C for 15" for hot parts handling.

### USE

- Mechanics.
- Automotive.
- Aeronautics.
- Installation and maintenance.
- Assembly lines and sub-assemblies.

GAUGE 13 Sizes from 6 to 12



## 4540RF POWER CUT

K-ROCK® glove with polyurethane palm coating.

### FEATURES

- Nitrile reinforcement between thumb and index finger **that provides greater resistance to wear and tear**.
- Fresh feeling thanks to its **breathability**.
- Great touch and excellent grip on dry and slightly damp surfaces.
- Suitable for use with touch devices.
- Available with individual blister for point of sale (H4540RF).

### USE

- Mechanics.
- Automotive.
- Aeronautical.
- Installation and maintenance.
- Assembly lines and sub-assemblies.
- Carpentry.
- Touch screen devices.

GAUGE 18 Sizes from 6 to 11



H4540RF

4540RF



## 4213 POWER CUT

K-ROCK® glove with polyurethane palm coating.

### FEATURES

- **Excellent mechanical resistance**, good grip and touch with **remarkable comfort**.
- Fresh feeling thanks to its **breathability**.
- **Good grip** in dry, slightly humid or oiled environments.
- **Excellent resistance** to abrasion.
- Greater durability.

### USE

- Automotive.
- Home appliance assembly.
- Aeronautics.
- Maintenance of facilities and buildings.
- Construction: ceramics, glass and metal handling.
- Metal sheets manufactory.
- Metal parts stamping.

GAUGE 13 Sizes from 6 to 11



# LATEX <

## H4580 POWER CUT

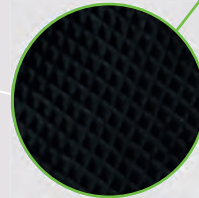
K-ROCK® glove with eco latex palm coating with suction cup pattern.

### FEATURES

- Excellent grip in dry and wet surfaces thanks to its suction cup pattern on palm.
- Ecological latex coating, no additives or chemicals used in its formulation.
- Good resistance to abrasion, **greater durability**.
- With header card for retail.
- Withstands **contact heat** (250°C to 15").

### USE

- Handling of objects with medium / high risk of cutting in dry, moist or dirty environments.
- Construction.
- Quarries.
- Ceramic and slates handling.
- Plumbing installations.
- Glass industry.



Micro suction cup design on the palm

GAUGE 13 | Sizes from 7 to 11



## 4426 POWER CUT

K-ROCK® glove with crinkle latex coating on palm.

### FEATURES

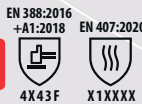
- High resistance to cutting objects with sharp edges.
- Excellent abrasion resistance, **greater durability**.
- Good grip in dry and wet environments.
- Good fit, comfort and **breathability**.
- Withstands **contact heat** (100°C to 15").

### USE

- Glass manufacturing and logistics.
- Ceramic industry.
- Recycling and waste collection.
- Windshields assembly.
- Handling of non-oiled metal sheets and parts.



GAUGE 13 | Sizes from 6 to 11



# UNCOATED <

## 5020BL POWER CUT

K-ROCK® seamless glove.

### FEATURES

- Ambidextrous.
- Good grip, comfort, flexibility and freshness.
- Maximum level of cut protection.
- Suitable for **food industry**.
- Can be used as a liner glove for extra protection.

### USE

- Food industry.
- Meat processing.
- Clean rooms.
- Flat glass assembly in automotive.
- Pulp and paper industry.



GAUGE 10 | Sizes from 6 to 10





# NITRILE

## 4220RF POWER FIT

K-ROCK® glove with double nitrile coating, sandy nitrile palm.

### FEATURES

- Reinforced between thumb and index finger to reduce to wear and tear.
- Flat nitrile half coating plus a second layer of **sandy nitrile** palm dipping that provides greater grip in dry, moist and oily environments.
- Withstands contact heat resistance, 100°C during 15".
- Nitrile offers a **better grip** in oily environments than any other coating.
- **Good resistance to abrasion**, enhanced durability.
- Excellent flexibility and comfort, tactile sensitivity.
- Suitable for use with **touch screen devices**.

GAUGE 18 | Sizes from 6 to 11



### USE

- Metal parts assembly.
- Metal transformation.
- Installations and maintenance.
- Automotive.
- Aeronautical maintenance.
- Injection and plastics demoulding.
- Glass handling.



EN 388:2016  
+A1:2018  
3 2 3 1 B

EN 407:2020  
X1 XXXX



## KR012RF POWER FIT

K-ROCK® glove with nitrile foam coating on palm.

### FEATURES

- Nitrile reinforcement between thumb and index finger to reduce wear and tear.
- **Fresh feeling** thanks to its breathability.
- **Excellent abrasion resistance**, durability enhanced.
- **Good grip in dry, wet, and oily environments** as nitrile provides greater resistance to oil and solvents than any other coating.

GAUGE 13 | Sizes from 6 to 10



### USE

- Automotive.
- Aeronautics and renewables.
- Electrical appliance industry (white line).
- Plastic injection molding.
- Bottling lines.
- Machining.



EN 388:2016  
+A1:2018  
4 3 4 3 B



## KR012FC POWER FIT

K-ROCK® glove with nitrile foam full coating.

### FEATURES

- **Great abrasion resistance**, greater durability.
- **Good grip in dry, wet, and oily environments** as nitrile provides greater resistance to oil and solvents than any other coating.
- Nitrile offers a **better grip** in oily environments than any other coating.
- Fully dipped to improve water tightness.
- Nitrile offers a **better grip** in oily environments than any other coating.

GAUGE 13 | Sizes from 7 to 10



### USE

- Automotive.
- Aeronautics and renewables.
- Electrical appliance industry (white line).
- Plastic injection molding.
- Bottling lines.
- Machining.



EN 388:2016  
+A1:2018  
4 3 4 3 B



## 4212RF POWER CUT

K-ROCK® glove with nitrile foam coating on palm.

### FEATURES

- Reinforcement between thumb and index finger that provides **greater resistance to wear and tear**.
- Withstands contact heat resistance, 100°C during 15".
- **Excellent grip on damp and oily surfaces**.
- Great abrasion resistance, extended durability.

GAUGE 13 | Sizes from 6 to 11



### USE

- Metal parts assembly.
- Metal transformation.
- Installations and maintenance.
- Automotive.
- Aeronautical assembly and maintenance.
- Injection and plastics demoulding.
- Glass handling.



EN 388:2016  
+A1:2018  
4X42D

EN 407:2020  
X1 XXXX



## 4230RF POWER CUT

K-ROCK® glove with double nitrile coating, sandy nitrile palm.

### FEATURES

- Reinforcement between thumb and index finger to reduce wear and tear.
- Flat nitrile fully dipped, second layer of sandy nitrile palm coating.
- Nitrile offers a **better grip** in oily environments than any other coating.
- Withstands **contact heat resistance** 100° C during 15".
- Excellent resistance to abrasion, **increased durability**.
- Suitable for use with **touch screen devices**.

GAUGE 13 | Sizes from 6 to 11



### USE

- Sharp objects handling with medium-high cutting risk.
- Bending and stamping of metal parts.
- Machining.
- Metal assembly.
- Handling of sheets.
- Manufacture of metal packaging.



EN 388:2016  
+A1:2018



4X42D

EN 407:2020



X1XXXX



## 4590WT WINTER

K-ROCK® glove with micro foam half coating and fleece lining.

### FEATURES

- **Knuckle coating** to protect palm, fingers and knuckles while keeping breathability.
- Extended protection to knuckle area.
- Protection against **contact heat up to 250° C** during 15".
- **Outstanding grip** on dry / damp and oily surfaces.
- Excellent resistance to abrasion, **increased durability**.
- **Touch screen** functionality.

GAUGE 13 | Sizes from 8 to 11



### USE

- Construction.
- Food industry.
- Frozen product handling.
- Transport and logistics.
- Heat / cold and cut risk environments.
- Glass industry.

NEW



EN 388:2016  
+A1:2018



4X42D

EN 407:2020



X2XXXX

EN 511:2006



020



## 4428 POWER CUT

K-ROCK® glove with bipolymer coating on palm, T-TOUCH® nitrile technology and water based PU.

### FEATURES

- Maximum cut resistance - Level F.
- **Nitrile / PU bipolymer coating** provides polyurethane flexibility and nitrile mechanical performance.
- Excellent resistance to abrasion, **increased durability**.
- **Excellent grip** in wet, oily and dry environments.
- **Contact heat resistance** 100° C during 15".
- **Reinforcement between index and thumb finger** to reduce wear on that area.

GAUGE 13 | Sizes from 6 to 11



### USE

- Oiled pieces handling.
- Automotive industry.
- Glass industry.
- Metal sheets handling.
- Plastic injection molding.



EN 388:2016  
+A1:2018



4X42F

EN 407:2020



X1XXXX



## 4434 POWER CUT

K-ROCK® glove with T-TOUCH® nitrile technology palm / knuckle coating, water-repellent split leather palm.

### FEATURES

- Maximum cut resistance - Level F.
- The T-Touch nitrile on the palm and half back provides greater impermeability to oils and moist in that area, for jobs with greater exposure to these products.
- Protection against contact heat (250°C for 15").
- Water repellent split leather that provides good grip and greater mechanical resistance and durability in wet or oiled environments.

GAUGE 13 | Sizes from 7 to 12



### USE

- Metallurgy and automotive.
- Metal stamping.
- Ceramics and glass handling.
- Cut risk in oiled applications.
- Hot and sharp objects handling.

NEW



EN 388:2016  
+A1:2018



4X44F

EN 407:2020



X2XXXX





# NITRILE

## 4211RF POWER CUT

K-ROCK® glove with sandy nitrile palm coating.

### FEATURES

- Reinforcement between thumb and index finger that provides **greater resistance to wear and tear**.
- **Greater grip** in dry, wet and oily environments.
- Excellent resistance to abrasion, **increased durability**.
- Tested for food handling.
- **Contact heat resistance** 100° C during 15".
- Suitable for use with **touch screen devices**.

### USE

- Metal folding.
- Metal parts stamping.
- Manufacture of metal containers.
- Metal profile works.
- Metal straps works.
- Maintenance works.
- Food industry.
- Tool and die shops.

GAUGE 13 Sizes from 6 to 11



12 120



EN 388:2016  
+A1:2018



EN 407:2020



4X42E

X1XXXX



4211RF

H4211RF

## 4560IM IMPACT

K-ROCK® glove with nitrile foam palms, TPR impact protection and padded palm. ANTI-IMPACT.

### FEATURES

- Very flexible TPR protectors on back and fingers, increase **protection on the back area**.
- Reinforcement between thumb and index finger.
- **Great resistance to abrasion**, greater longevity.
- **Good grip** in dry, slightly humid or oily environments.
- **Contact heat resistance** 100° C during 15".
- Available with individual blister for retail (H4560IM).

### USE

- Heavy duty applications.
- Impact risk.
- Handling objects with sharp edges.
- Wind power construction and maintenance.
- Elevators.
- Petrochemical industry.
- Construction.
- Public works.
- Quarries.
- Ceramic industry.

GAUGE 13 Sizes from 8 to 11



6 60



EN 388:2016  
+A1:2018



EN 407:2020



4X43CP

X1XXXX



H4560IM

4560IM



## 4550IM IMPACT

K-ROCK® glove with sandy nitrile coating on palm, impact protectors on fingers and back. ANTI-IMPACT.

### FEATURES

- Very flexible TPR protectors on back and fingers, increase **protection on the back area**.
- **Great resistance to abrasion**, greater durability.
- **Good grip** in dry, slightly humid or oily environments.
- **Contact heat resistance** 100° C during 15".

### USE

- Heavy duty applications.
- Impact risk.
- Handling objects with sharp edges.
- Wind power construction and maintenance.
- Elevators.
- Petrochemical sector.
- Quarries.
- Ceramic industry.

GAUGE 13 Sizes from 6 to 11



6 60



EN 388:2016  
+A1:2018



EN 407:2020



4442CP

X1XXXX



## KS5850 POWER CUT

K-ROCK® seamless sleeves.

### FEATURES

- Comfort, breathability and freshness.
- Adjustable width on arm, thumb hole for good hand fitting.
- **The thumb hole** ensures that the cuff does not roll, nor expose the wrist and forearm.
- Use with an appropriate glove on top.
- Certified for **food industry**.
- **Contact heat resistance** 100° C during 15".
- 46 cm long.

### USE

- Glass industry.
- Mechanical engineering.
- Aeronautic industry.
- Home appliances industry.
- Automotive sector.
- Cardboard industry.
- Food industry.

ONE SIZE



12 144



EN 388:2016  
+A1:2018



EN 407:2020



4X4XE

X1XXXX





# K-ROCK

SAFETY  
RESISTANCE  
ENGINEERING

## Regulations

	Models	Tactile	Cut Level	Regulations						Environments		
				EN388	EN407	EN511	EN16350	Anti-impact	Alimentary	Dry	Wet	Oil
POLYURETHANE	4422	✓	C	2X42C			✓			*****	**	**
	4570RF		D	4X43D	X1XXXX					*****	**	**
	4540RF/H4540RF	✓	D	3X42D						*****	**	**
	4213		E	4X44E						*****	**	**
NITRILE	H4580		D	2X43D	X2XXXX					*****	***	
	4426		F	4X43F	X1XXXX					*****		
	4220RF	✓	B	3231B	X1XXXX					*****	*****	*****
	KR012RF		B	4343B						***	***	*****
	KR012FC		B	4343B						***	***	*****
	4212RF		D	4X42D	X1XXXX				✓	***	*****	*****
	4230RF	✓	D	4X42D	X1XXXX					*****	*****	*****
	4590WT	✓	D	4X42D	X3XXXX	020			✓	***	***	***
	4428		F	4X42F	X1XXXX					*****	*****	*****
	4434		F	4X44F	X2XXXX					***	***	*****
	4211RF/H4211RF	✓	E	4X42E	X1XXXX				✓	*****	*****	*****
	4560IM/H4560IM		C	4X43CP	X1XXXX				✓	*****	*****	*****
	4550IM		C	4442CP	X1XXXX				✓	*****	***	***
UNCOATED	5020BL		F	4X41F	X1XXXX	X2X				****		
	KS5850		E	4X4XE	X1XXXX				✓	**	*****	**

SAFETY EVOLUTION  
**JUBA**

### JUBA PERSONAL PROTECTIVE EQUIPMENT

Avda. de Logroño 29-31, 26250 Santo Domingo de La Calzada, La Rioja, Spain.

+ 34 941 340 885 / export@juba.es / www.jubappe.com